



Special points of interest:

- Wednesday February 26—Monthly Meeting
- Tuesday April 1— Chapter Board Meeting

Volume 2014 Issue 4

April, 2014

## President's Message

### CAREFUL IT'S STILL MUDDY

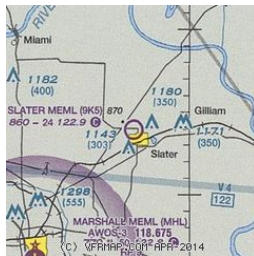
Back in another life (in the sixties), I took a friend to the rural airport in Slater, Missouri. It was at this time of year, it was a beautiful day, it was muddy, and it was the warmest day so far in that spring. Did I mention that it was muddy. Probably one of the best (read shortest) short field landings I ever made. It took full throttle to get



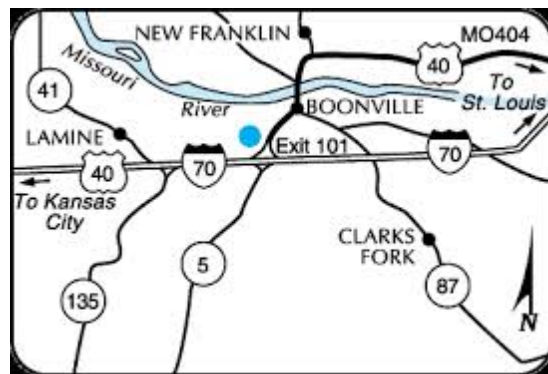
to the end of the runway and let my buddy out. But this story isn't about the landing, it's about

the subsequent takeoff. Remember the part about using all that power to taxi to the ramp? That should have been my cue to what was about to happen.

I slobbered the plane to the end of the runway, lined up with the runway heading and advanced the throttle. Many caterpillar tractors have pushed less mud than that little airplane did that day. About a third of the way down the runway and at about 25kts I turned off into the grass to go back and try again. No sooner than I got into the grass on the side of the runway it hit me that I was no longer pushing mud from about axle deep. So I initiated the second attempt from the turf along the side of the runway. Less mud, lots of tall grass, but still less drag. Now the



training about short/soft field technique begins to sink (no pun intended) in. Yeah, I'm writing this today so I made it! but certainly not comfortably! "You need to practice most, the things you use the least" cause you just never know! When was the last time you practiced your short or soft field technique? Planning a trip which might turn into something like Slater (in the early spring)? Prior to that spring trip, maybe a little recurrent training is in order. CAREFUL, IT'S SPRING, BUT IT'S STILL MUDDY!



See you in Boonville!  
fjs



### Inside this issue:

President's Message	1
Program and Presenter	2
Meal & Reservations	3
Future Meeting Dates	3
Calendar	3
Advertisements	4

## April Meeting—FAA Appreciation



# Federal Aviation Administration

Our annual April Meeting is when we show our appreciation for FAA. It is an opportunity to learn new activities within FAA and how it effects us.



Have your questions ready for the FAA representatives.



**FAA  
Appreciation  
Meeting**

## Missouri State Aviation Day 2014



Come to the April Meeting and hear a report on Missouri State Aviation Day 2014

**MEETING MENU:**

- Taco Bar
- Spanish Rice
- Green Beans
- Refried Beans
- Coffee & Tea
- Ice Cream

**Reservations:**

Email Terrie Jo,  
[Terrie@Foxware.com](mailto:Terrie@Foxware.com)  
 or Call 816-525-3592 (home)  
 or 816-985-5406 (Gary's Cell)  
 by Monday **April 21, 2014**

**Future Meeting Dates**



April 23—*FAA Appreciation*

We are looking for suggestions of speakers for upcoming meetings. You suggest, we invite and all will enjoy

**Calendar of Events (## indicates KC local)**

- ##Apr 23 (4<sup>th</sup> Wednesday )** Membership Dinner Meeting, 6 PM, HY-VEE at Noland Rd & 40 HWY
- ##May 6 (1<sup>st</sup> Tuesday)** Board Meeting, 7 PM, Downtown Airport
- ##May 28 (4<sup>th</sup> Wednesday )** Membership Dinner Meeting, 6 PM, HY-VEE at Noland Rd & 40 HWY
- May 31 The 61th Anniversary Celebration of the Missouri Pilots Association**—Isle of Capri Convention Center, 100 Isle of Capri, Boonville, MO

**CHECK CALENDAR AT [www.MOpilotsKC.org/calendar](http://www.MOpilotsKC.org/calendar) FOR LATEST EVENTS AND UPDATES.**

**OUR OWN WEBSITE!** The Kansas City Chapter of the Missouri Pilots Association (MPA) has its own website. Please visit early and visit often at [www.MOpilotsKC.org](http://www.MOpilotsKC.org) (capital letters not required). Updating coming soon. *Tom Eagle*

**FREE MEAL**

**\$13**

The monthly dinner costs have increased

## Kansas City Chapter of Missouri Pilots Association

1007 SW Orrington Place

Lee's Summit, MO 64081

Phone: 816-524-4040

E-mail: Tom@MOpilotsKC.org



Blue Skies

---

## Advertisements



Please join us for the Missouri Pilots Annual Convention

WHEN: May 31<sup>st</sup> , 2014

Where: Isle of Capri Convention Center, 100 Isle of Capri, Boonville, MO 65223 660-882-1200 for reservations . Please mention the Missouri Pilots Association for the \$89.99 + tax per night rate. This rate will be held until 5-24-2014 for the block of rooms. After 5-24 the rate is not guaranteed.

Fly in : Jesse Verteil Airport , 20044 Pearre Lane, Boonville, MO 65223 660-882-7441

Registration includes Banquet Dinner and Entertainment on Friday night .

Single ticket price: \$30.00 Couple (joint membership) \$45.00