



Special points of interest:

- Saturday June 21—LXT Open House
- Wednesday June 25—Monthly Meeting
- Tuesday July 1— Chapter Board Meeting
- NO JULY MONTHLY MEETING

Volume 2014 Issue 6

June, 2014

President's Message

Birds of a Feather

She landed on the elevator, ducked between the elevator and horizontal stabilizer, jumped through the lightening hole in the rear spar, then scurried through the stabilizer into the fuselage.



Overnight she built her new home and laid three eggs. No it wasn't a single parent family, her mate helped

too. The point is, it was a lot of work and it was a bit of a circuitous route to get to their new home.



The problem is, that this wasn't an isolated incident. In fact some days it happens several times and sometimes in as little as 25 minutes (between flights). OK eggs take slightly longer (but only slightly) As you probably already noted, this isn't where you normally check for stowaway aviators.

BELIEVE ME THEY'RE IN ALL THE NORMAL PLACES TOO. It doesn't matter how tight the inlet plugs are, because they crawl between the cowl-

ing, the spinner, and the crankshaft. Our maintenance crew has

spent several hours per day for many weeks removing birds, nests, eggs, hatchlings and bird droppings. One student pilot reported a restriction in the elevator control and maintenance removed five birds who had taken up resi-

dence near the elevator bell crank. (It came out of the hangar that morning) All of this takes place daily on a fleet of 24 training aircraft which are usually hangared. The planes rarely sit out overnight, and are rarely idle more than an hour on the ramp.

What does this mean for an aircraft which sits outdoors at the tie down for days or weeks at a time? I think that the answer is self evident!!! You cant check too often or too many places. I consulted an ornithologist and he offered only a bit of help in advising us that "mating season will end soon and the problem will diminish somewhat SOMEWHAT???"

In 47 years of flying I don't remember this problem ever being this serious. For safety-extend your preflight to include listening, looking, and perhaps sniffing for uninvited passengers. If there is some doubt—pull a panel and be sure.
fjs

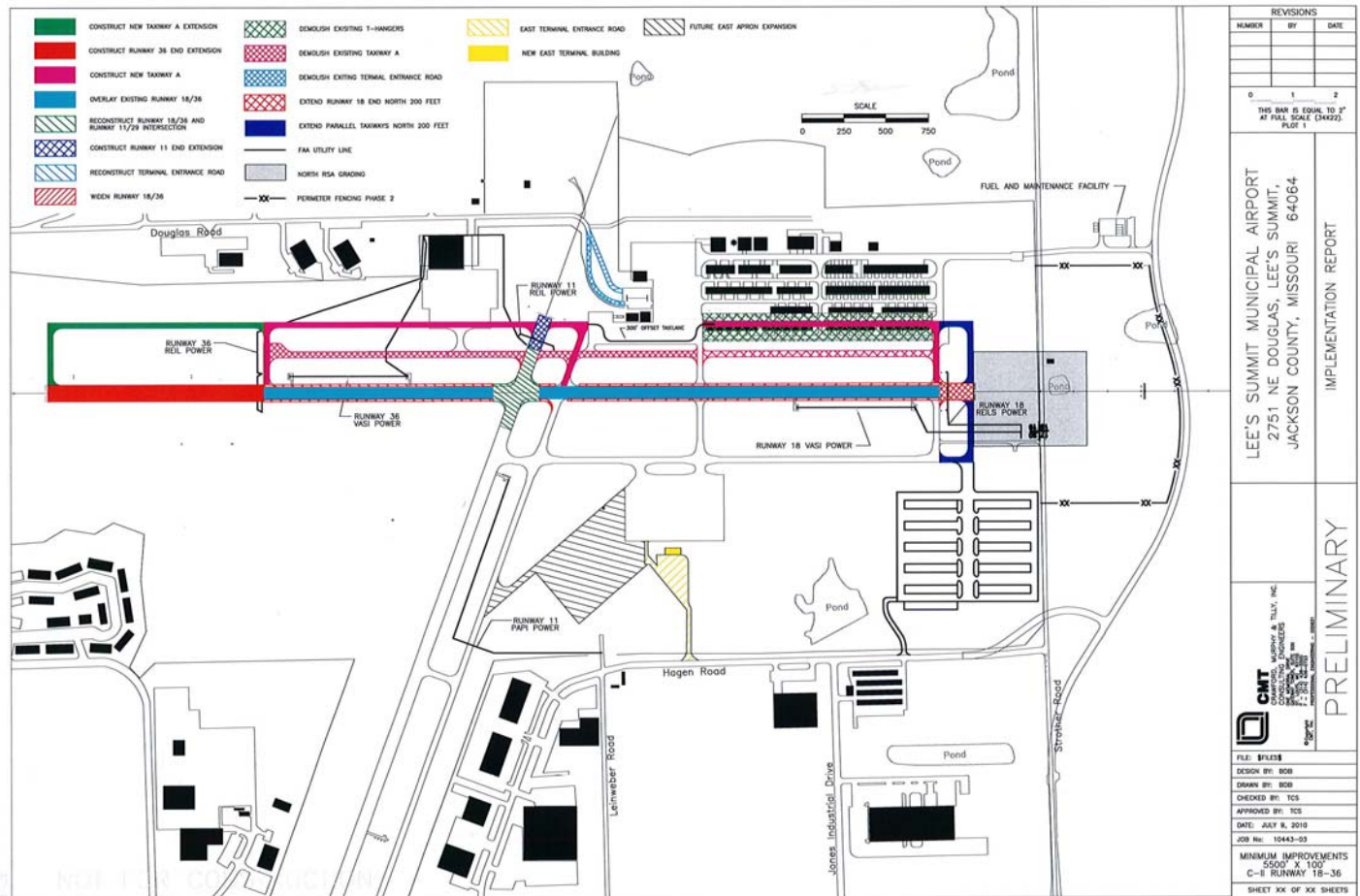
Inside this issue:	
President's Message	1
Program and Presenter	2
Meal & Reservations	3
Future Meeting Dates	3
Calendar	3
Advertisements	4

JUNE MEETING PRESENTED BY JOHN OHRAZDA



If you haven't been to the Lee's Summit Airport (LXT) lately, you are in for some changes. The road up to the terminal buildings has changed with a smooth curving road. If you head to the terminal building and then want to go to the hangars, you may wonder how to get in — you will find out that the gate has been moved to the West. There are many other changes that have taken place.

That is only the start of changes to come to LXT. John will update us with the latest changes and the future changes



REVISIONS		
NUMBER	BY	DATE

0 1 2
THIS BAR IS EQUAL TO 2" AT FULL SCALE (34x22)
FOOT 1

LEE'S SUMMIT MUNICIPAL AIRPORT
2751 NE DOUGLAS, LEE'S SUMMIT,
JACKSON COUNTY, MISSOURI 64064

IMPLEMENTATION REPORT

PRELIMINARY

CMT
COMMUNITY DEVELOPMENT & TRAFFIC, INC.
1000 N. W. 10th St., Suite 100
Ocala, FL 32107
Tel: 352.349.1111
Fax: 352.349.1112
www.cmtinc.com

FILE: 8FL28
DESIGN BY: BOB
DRAWN BY: BOB
CHECKED BY: TCS
APPROVED BY: TCS
DATE: JULY 8, 2010
JOB NO: 10443-03
MINIMUM IMPROVEMENTS
5500' X 100'
C-I RUNWAY 18-36
SHEET XX OF XX SHEETS

Lee's Summit Airport (LXT) Open House

PLEASE HELP
US AT OUR
BOOTH !!
Shade

The Kansas City Chapter of Missouri Pilots Association will have a booth at the Lee's Summit Airport Open House (FREE Event). **We need to staff the booth from 8:30 a.m. to 4:30 pm.** Please let Gary Fox or Tom Eagle know when you are available. We need at least two members there at all time.

MEETING MENU:

Lasagna

Caesar Salad

Mixed Fruit

Bread Sticks

Coffee & Tea

Cherry Chrisp

Reservations:

Email Terrie Jo,

Ter-rie@Foxware.com

or Call 816-

525-3592 (home)

or 816-985-

5406 (Gary's Cell)

by Monday **June****23, 2014****Future Meeting Dates**June —*REGULAR DINNER MEETING*

We are looking for suggestions of speakers for upcoming meetings. You suggest, we invite and all will enjoy

Calendar of Events (## indicates KC local)

June 21 Lee's Summit Airport (LXT) Open House

June 25 (4th Wednesday) Membership Dinner Meeting## July (NO MEETING) See you in Oshkosh—EAA AIRVENTURE

CHECK CALENDAR AT www.MOpilotsKC.org/calendar FOR LATEST EVENTS AND UPDATES.

OUR OWN WEBSITE! The Kansas City Chapter of the Missouri Pilots Association (MPA) has its own website. Please visit early and visit often at www.MOpilotsKC.org (capital letters not required). Updating coming soon. *Tom Eagle*

\$15

The monthly
dinner costs
have
increased
OR

\$3

Drinks and
Room Fee

Kansas City Chapter of Missouri Pilots Association

1007 SW Orrington Place

Lee's Summit, MO 64081

Phone: 816-524-4040

E-mail: Tom@MOpilotsKC.org



Blue Skies

Lee's Summit Airport Open House



Airplanes * Pancake Breakfast * Bouncy House * Face Painting * Young Eagles

9 a.m. - 4 p.m.
Saturday, June 21, 2014
2751 NE Douglas St.

Free event at the
Lee's Summit Airport.
LSairport.net | 816.969.1800

